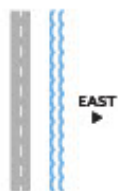
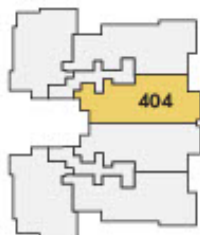


Residence 404



FOURTH FLOOR



EAST	3	3.5	2,132	358	2,490
DIRECTION	BEDROOMS	BATHS	A/C LIVING AREA	COVERED TERRACES	TOTAL S.F.

Artist's conceptual illustration only. Subject to modification.

 ORAL REPRESENTATIONS CAN NOT BE RELIED UPON AS CORRECTLY STATING REPRESENTATIONS OF THE SELLER. FOR CORRECT REPRESENTATIONS, MAKE REFERENCE TO THIS BROCHURE AND TO THE DOCUMENTS REQUIRED BY SECTION 718.503, FLORIDA STATUTES TO BE FURNISHED BY A SELLER TO A BUYER OR LESSEE.

All dimensions, features, and specifications are approximate and subject to change without notice. Square footage listed above represents marketing square footage (please refer to section 32 of the Declaration and Exhibit 5 for more information). Brokers used by enclosed.

SALATO
POMPANO BEACH

Residence 405



FOURTH FLOOR



**NORTH/
EAST**
DIRECTION

3
BEDROOMS

3.5
BATHS

2,308
A/C LIVING
AREA

365
COVERED
TERRACES

2,673
TOTAL S.F.

Artist's conceptual illustration only. Subject to modification.



ORAL REPRESENTATIONS CANNOT BE RELIED UPON AS CORRECTLY STATING REPRESENTATIONS OF THE SELLER. FOR CORRECT REPRESENTATIONS, MAKE REFERENCE TO THIS BROCHURE AND TO THE DOCUMENTS REQUIRED BY SECTION 718.503, FLORIDA STATUTES TO BE FURNISHED BY A SELLER TO A BUYER OR LESSEE.

All dimensions, features, and specifications are approximate and subject to change without notice. Square footage listed above represents marketing square footage (please refer to section 3.2 of the Declaration and Exhibit 5 for more information). Brokers warmly welcomed.

SALATO

POMPANO BEACH

Residence 304



THIRD FLOOR



EAST	3	3.5	2,132	358	2,490
DIRECTION	BEDROOMS	BATHS	A/C LIVING AREA	COVERED TERRACES	TOTAL S.F.

Artist's conceptual illustration only. Subject to modification.

ORAL REPRESENTATIONS CAN NOT BE RELIED UPON AS CORRECTLY STATING REPRESENTATIONS OF THE SELLER. FOR CORRECT REPRESENTATIONS, MAKE REFERENCE TO THIS BROCHURE AND TO THE DOCUMENTS REQUIRED BY SECTION 718.503, FLORIDA STATUTES TO BE FURNISHED BY A SELLER TO A BUYER OR LESSEE.

All dimensions, features, and specifications are approximate and subject to change without notice. Square footage listed above represents marketing square footage (please refer to section 32 of the Declaration and Exhibit 5 for more information). Brokers used by enclosed.

SALATO
POMPANO BEACH

Residence 305



NORTH/EAST DIRECTION	3 BEDROOMS	3.5 BATHS	2,308 A/C LIVING AREA	365 COVERED TERRACES	2,673 TOTAL S.F.
----------------------	------------	-----------	-----------------------	----------------------	------------------

Artist's conceptual illustration only. Subject to modification.

ORAL REPRESENTATIONS CAN NOT BE RELIED UPON AS CORRECTLY STATING REPRESENTATIONS OF THE SELLER. FOR CORRECT REPRESENTATIONS, MAKE REFERENCE TO THIS BROCHURE AND TO THE DOCUMENTS REQUIRED BY SECTION 718.503, FLORIDA STATUTES TO BE FURNISHED BY A SELLER TO A BUYER OR LESSEE.

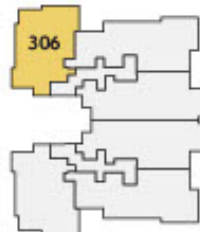
All dimensions, features, and specifications are approximate and subject to change without notice. Square footage listed above represents marketing square footage (please refer to section 32 of the Declaration and Exhibit 5 for more information). Brokers warranty enclosed.



Residence 306



THIRD FLOOR



NORTH/ WEST DIRECTION	3 BEDROOMS	3.5 BATHS	2,106 A/C LIVING AREA	320 COVERED TERRACES	2,426 TOTAL S.F.
-----------------------------	---------------	--------------	-----------------------------	----------------------------	---------------------

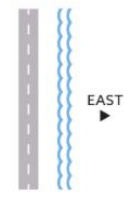
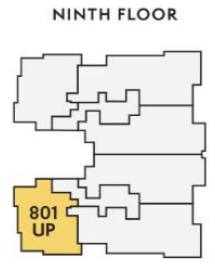
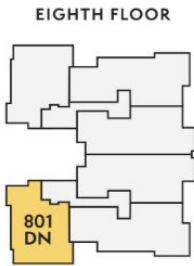
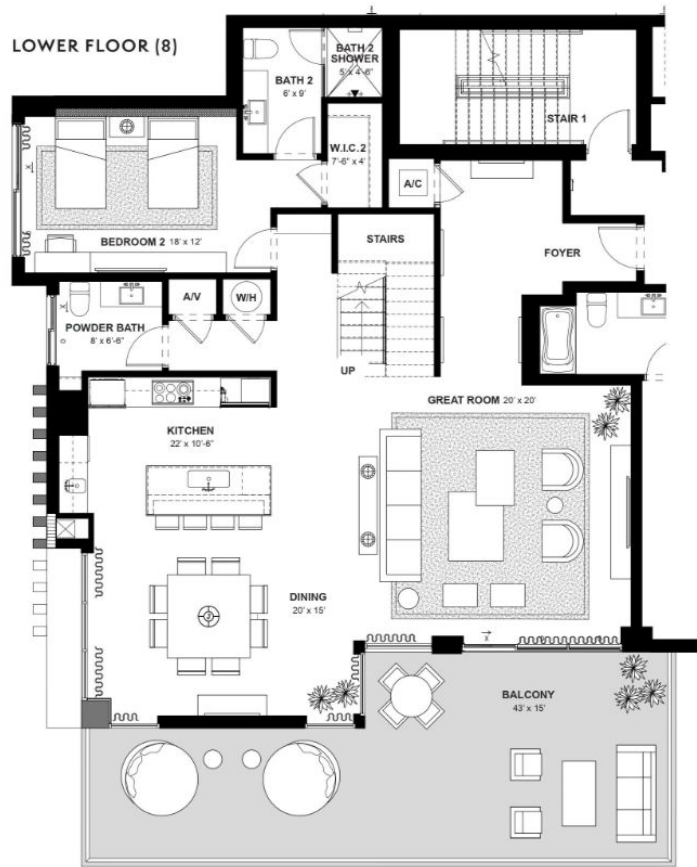
Artist's conceptual illustration only. Subject to modification.

 ORAL REPRESENTATIONS CAN NOT BE RELIED UPON AS CORRECTLY STANDING REPRESENTATIONS OF THE SELLER. FOR CORRECT REPRESENTATIONS, MAKE REFERENCE TO THIS BROCHURE AND TO THE DOCUMENTS REQUIRED BY SECTION 718.503, FLORIDA STATUTES TO BE FURNISHED BY A SELLER TO A BUYER OR LESSEE.

All dimensions, features, and specifications are approximate and subject to change without notice. Square footage listed above represents marketing square footage (please refer to section 32 of the Declaration and Exhibit 5 for more information). Brokers used by enclosed.

SALATO
POMPANO BEACH

Residence 801



SOUTH/WEST
DIRECTION

3	3.5	3,354	746	4,100
BEDROOMS	BATHS	A/C LIVING AREA	COVERED TERRACES	TOTAL S.F.

Artist's conceptual illustration only. Subject to modification.

ORAL REPRESENTATIONS CANNOT BE RELIED UPON AS CORRECTLY STATING REPRESENTATIONS OF THE SELLER. FOR CORRECT REPRESENTATIONS, MAKE REFERENCE TO THIS BROCHURE AND TO THE DOCUMENTS REQUIRED BY SECTION 718.503, FLORIDA STATUTES TO BE FURNISHED BY A SELLER TO A BUYER OR LESSEE.

All dimensions, features, and specifications are approximate and subject to change without notice. Square footage listed above represents marketing square footage (please refer to section 3.2 of the Declaration and Exhibit 5 for more information). Brokers warmly welcomed.

